

**40K Rigid Lances** Advanced Pressure Systems proudly offers a growing line of quality rigid lances every pressure and application. When ordering, please specify left or right hand thread, length and thread size.

Part #	Connection	I.D. & O.D.
52-000-XXX	1/4" HP	.247 OD x .089 ID
52-001-XXX	3/8" HP	.370 OD x .125 ID
52-002-XXX	9/16" HP	.557 OD x .187 ID

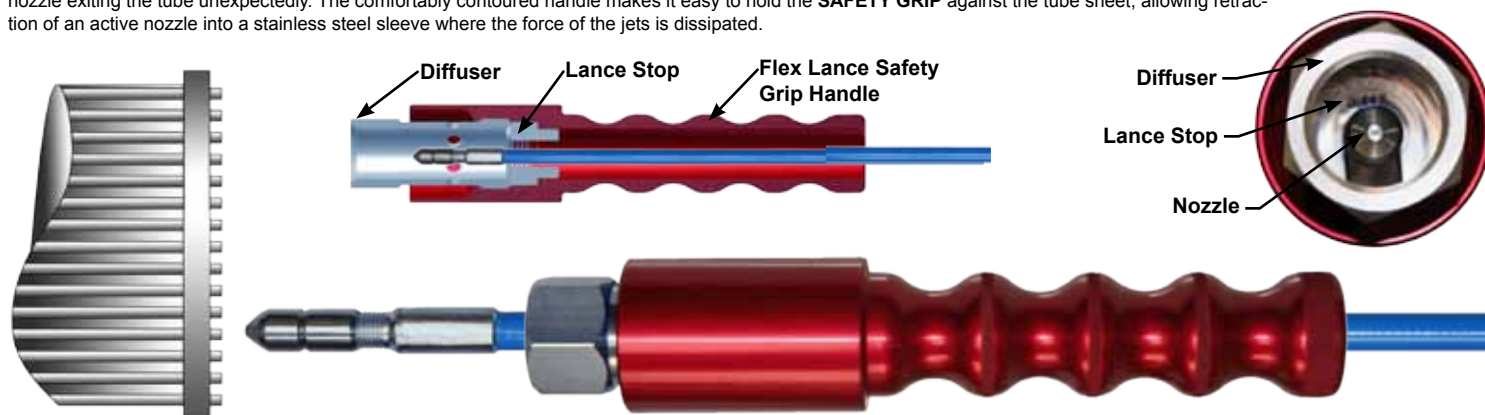


**40K Flex Lance Stingers/Nipples** Advanced Pressure Systems proudly offers a growing line of quality rigid lances every pressure and application. Left hand or right hand threaded, coned, button seal and UHM threads are available. When ordering, please specify length and thread size.

Part #	Thread	Length, In.
23-020-003	1/4" HP	3"
23-020-004	1/4" HP	4"
23-020-006	1/4" HP	6"
23-020-008	1/4" HP	8"
23-020-012	1/4" HP	12"
23-020-018	1/4" HP	18"
23-020-024	1/4" HP	24" (2 Ft.)
23-020-036	1/4" HP	36" (3 Ft.)
23-020-048	1/4" HP	48" (4 Ft.)
23-021-003	3/8" HP	3"
23-021-004	3/8" HP	4"
23-021-006	3/8" HP	6"
23-021-008	3/8" HP	8"

Part #	Thread	Length, In.
23-021-012	3/8" HP	12"
23-021-018	3/8" HP	18"
23-021-024	3/8" HP	24" (2 Ft.)
23-021-036	3/8" HP	36" (3 Ft.)
23-021-048	3/8" HP	48" (4 Ft.)
23-022-003	9/16" HP	3"
23-022-004	9/16" HP	4"
23-022-006	9/16" HP	6"
23-022-008	9/16" HP	8"
23-022-012	9/16" HP	12"
23-022-018	9/16" HP	18"
23-022-024	9/16" HP	24" (2 Ft.)
23-022-036	9/16" HP	36" (3 Ft.)
23-022-048	9/16" HP	48" (4 Ft.)

**Flex Lance Safety Grip** The FLEX LANCE SAFETY GRIP is designed to minimize the risk of injury to flex lance operators caused by a live nozzle exiting the tube unexpectedly. The comfortably contoured handle makes it easy to hold the SAFETY GRIP against the tube sheet, allowing retraction of an active nozzle into a stainless steel sleeve where the force of the jets is dissipated.



The FLEX LANCE SAFETY GRIP is simple to install and is quickly adapted to handle various lance sizes by selecting the appropriately sized LANCE STOP.

Part #	Flex Lance Safety Grip
35-009-000	COMPLETE ASSEMBLY: Small Flex Lance Safety Grip*
35-009-001	HANDLE: Small Flex Lance Safety Grip
35-009-007	DIFFUSER: Small Flex Lance Safety Grip



**Installation of LANCE STOPS:** Simply unscrew the DIFFUSER from the SAFETY GRIP HANDLE, which will allow the LANCE STOP to be removed. Insert the new lance into the back of the SAFETY GRIP HANDLE. Select the correct size LANCE STOP for the lance to be used and place it onto the lance behind the nozzle end fitting. Insert the nozzle through the DIFFUSER and tighten the assembly into the HANDLE. (Note: the larger diameter end of the Lance Stop must be next to the end fitting.)

Part #	Lance Stop Description
35-009-002	Stop .323 Flex Lance Safety Guard Lance
35-009-003	Stop .390 Flex Lance Safety Guard Lance
35-009-004	Stop .442 Flex Lance Safety Guard Lance (2005 Lance)
35-009-005	Stop .510 Flex Lance Safety Guard Lance (2006 Lance)
35-009-006	Stop .725 Flex Lance Safety Guard Lance (2108 Lance)
35-009-010	Stop .290 Flex Lance Safety Guard Lance (3/2 & 3004 Lance)
35-009-011	Stop .530 Flex Lance Safety Guard Lance (6005 Lance)
35-009-012	Stop .570 Flex Lance Safety Guard Lance (1/4" NPT & 9/16" Rigid Lance Size)
35-009-013	Stop .470 Flex Lance Safety Guard Lance (4005 Lance)
35-009-014	Stop .870 Flex Lance Safety Guard Lance

# LANCE SAFETY STOP

## Articulated Flex Lance Safety Stop For Tube Sheet Mounting

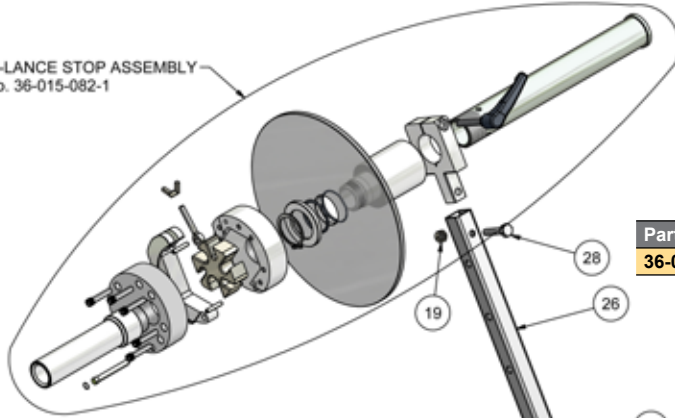
This takes the Hand Held "Flex Lance Safety Grip" to the next level. This versatile lance stop/anti-withdrawal device attaches easily to the tube sheet for safer pipe cleaning operations. It features ready adaptability to vertical or horizontal applications and its wide range of expansion accommodates any size of tube sheet. Construction is galvanized steel with aluminum handles and includes a Lexan™ splash guard.

The stops for six sizes of lances are provided by a quick-change insert, which is built into the design. This eliminates the problem of lost lance stops and makes changing to a different lance diameter quick and easy.

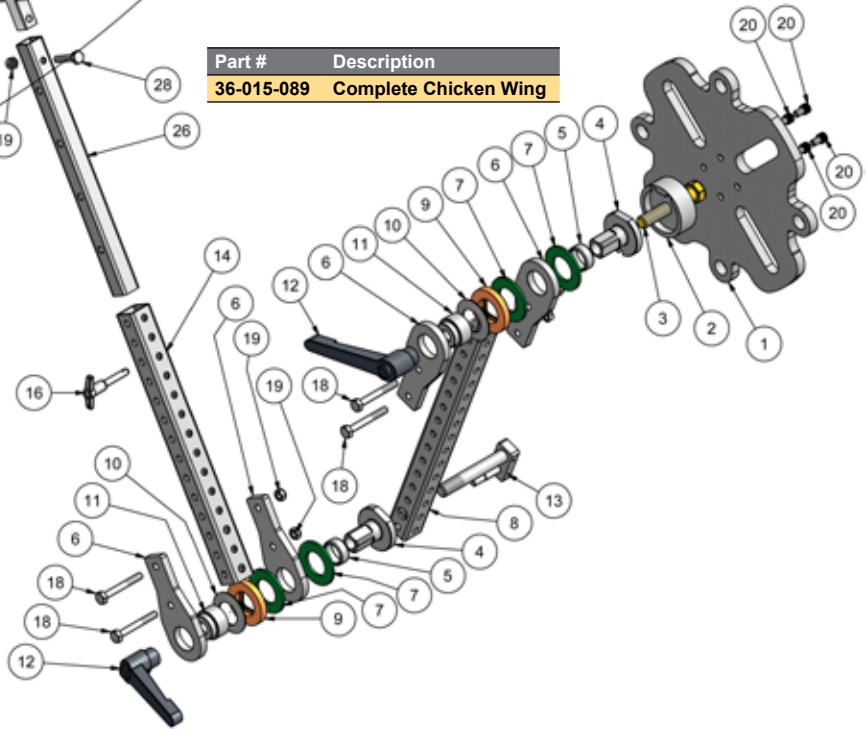
### Change of Lance Stop Size:

1. Unscrew **Cover**.
2. Open **Lance Stop Retainer Latch**.
3. Pull out **Lance Stop Insert**.
4. Feed lance into **Support Tube**.
5. Select **Stop** size and install Insert.
6. Close **Latch** and replace **Cover**.

MULTI-LANCE STOP ASSEMBLY  
Part No. 36-015-082-1



Part # Description  
36-015-089 Complete Chicken Wing



ITEM	QTY	PART #	DESCRIPTION
1	1	36-015-026	Chicken Wing Mounting Plate
2	1	36-015-025	Clutch Mounting Plate
3	1	10-121-350	Hex. Head Bolt 5/8"-11 x 3-1/2" long
4	2	36-015-046	Limiter - AWD Modified Torque
5	2	36-015-034	Bearing - Torque Limiter
6	4	36-015-016	Pivot Mounting Plate
7	4	36-015-033	Torque Limiter Fiber Washer
8	1	36-015-018	Telespar Arm
9	2	36-015-035	Torque Limiter Spacer (Orange)
10	2	36-015-032	Spring Washer
11	2	36-015-023	Spacer for Torque Limiter
12	2	36-015-028	Handle
13	1	36-015-068	Pivot Pin & Locking Plate Assembly
14	1	36-015-019	Telespar Arm
16	1	36-015-027	Extension Locking Pin
18	4	10-015-250	Hex. Head Bolt 5/16"-18 x 2-1/2" long
19	5	10-100-003	Nylon Lock Nut 5/16"-18 SS
20	4	10-002-050	SHCS 5/16"-18 x 1/2" long SS
26	1	36-015-088	New Telespar Extension Arm
27	1	36-015-082-1	Multi-Lance Stop Assembly
28	1	10-015-150	Hex. Head Bolt 5/16"-18 x 1-1/2" long

ITEM	QTY	PART #	DESCRIPTION
1	1	36-015-070	Lance Stop Body - Part 1
2	1	36-015-072	Lance Stop Body - Part 2
3	1	36-015-073	Lance Guide Tube
4	1	36-015-071	Latch - Lance Stop Holder
5	1	36-015-074	Latch Bolt
6	2	36-015-080	Dowel Pin
7	1	36-015-007	Lance Stop Insert
8	1	36-015-069	Clamp (new Style)
9	1	36-015-044	Splash Shield (1.5" Size)
10	2	30-001-127	O-Ring
11	1	36-015-031	Handle
12	1	36-015-075	Wing Nut
13	5	10-001-125	SHCS 1-1/4" long SS
14	1	36-015-077	Latch Pivot Pin
15	1	36-015-078	Retaining Clip
17	1	36-015-081	Extension Tube Holder
18	1	36-015-084	Splash Shield Retaining Ring
19	1	10-121-150	Retaining Clip (5100-150) SS
20	1	36-015-087	Extension Tube

